



# Earthstone

Collection

Naturally individual worksurfaces

# Earthstone

Collection

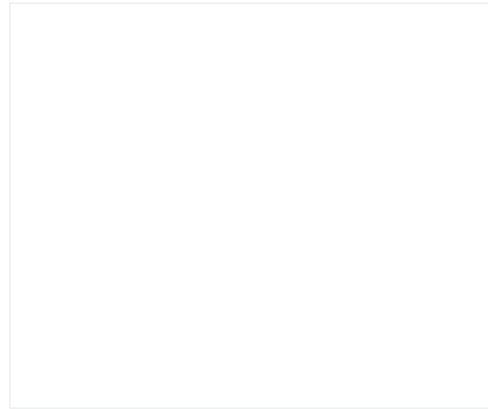
Bridging the gap between laminate and granite, Earthstone acrylic worksurfaces add a new dimension to the kitchen.

Presenting our acrylic worksurface range, Earthstone is engineered to meet the everyday demands of the kitchen environment all the while providing a stunning surface appearance. Through a selection of 10 distinct designs, our range offers something to suit a vast range of kitchen styles.

Naturally individual worksurfaces

Earthstone  
Collection

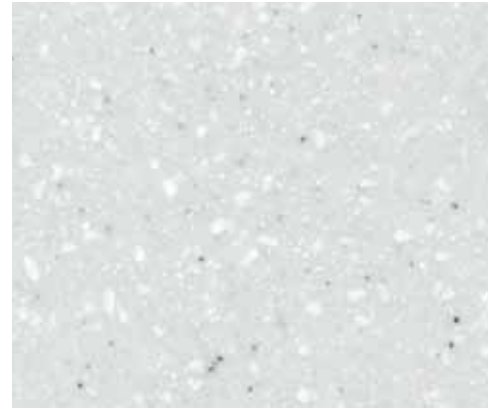
## The Earthstone Range



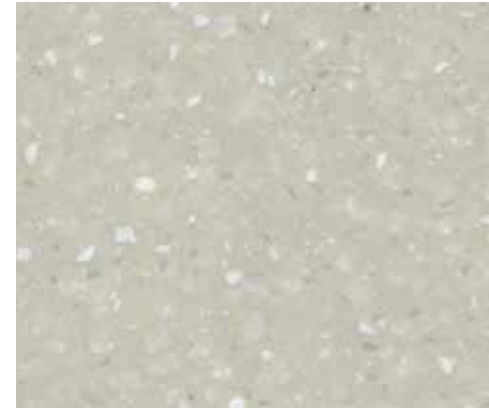
4023 Glacier



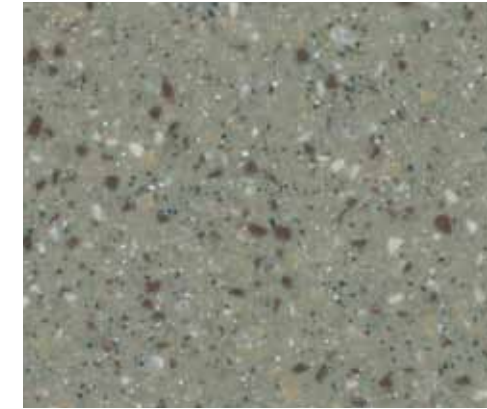
1010 Gemini ★



4218 Nordic Melange



4220 Pastel Melange

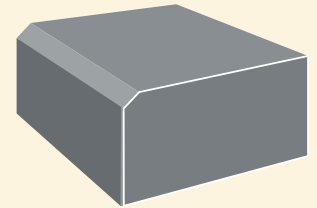


4217 Coffee Melange

### Profiles

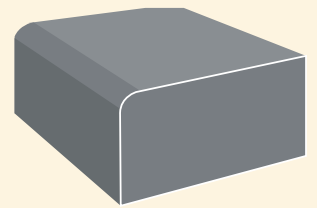
#### Bevel edge

★ Select designs are finished with a bevel edge profile, creating a truly premium appearance that simulates granite.

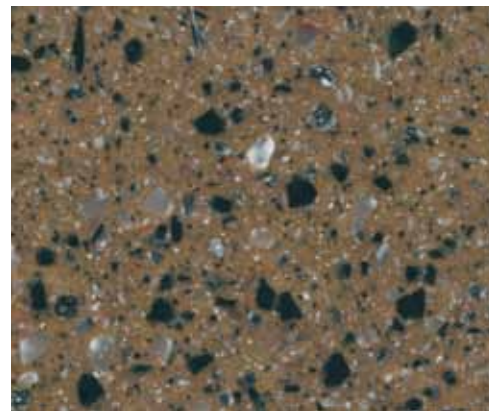


#### 3mm profile edge

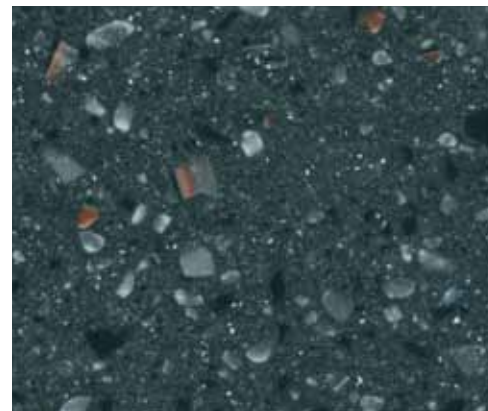
The rest of the range features a 3mm profile, providing a slightly softer, subtly rounded look.



4260 Mocha Odyssey



2800 Scorpio ★



4759 Libra ★



4245 Graphite



4219 Black Star Melange



Earthstone can provide great design flexibility; the full collection is available in a combination of sizes, from worksurfaces to breakfast bars, all are supplied semi-finished, ready for installation. With an array of complementary worksurface accessories also available, Earthstone can truly transform a kitchen design.

Within the dynamic range, three exclusive designs showcase the next generation in solid surfacing; combining larger coloured particles with a bevel edge profile to deliver eye catching surfaces that make a statement. The surface has the look and feel of natural stone that's smooth and cool to the touch; Earthstone really could be mistaken for genuine granite.

### Why choose an Earthstone worksurface?

- The solid, inconspicuous joints create a seamless look giving the worksurface the distinctive appearance of being custom made for every individual installation.
- Unlike most other materials, Earthstone is completely renewable and repairable, providing a surface that looks newer, longer.
- Ease of installation means Earthstone can be installed on-site with the kitchen, without the need for templating, dramatically reducing fitting complexities, time and cost.
- Hygienic and easy to clean with a naturally built in non-porous surface, resistant to most household stains, mould, mildew and bacteria growth.
- Comparable to natural stone without the high price tag.

### Creating the Earthstone bespoke look

Earthstone can transform a kitchen design and offer a truly bespoke look, from curved island pieces to moulded undermount sink modules. The best bit is, it can all be done on-site without the cost and time of templating. Refer to the Earthstone installation leaflet for full details and to see why Earthstone is the perfect solution for a bespoke design, without the bespoke price tag.



Libra worksurface



Coffee Melange sink module



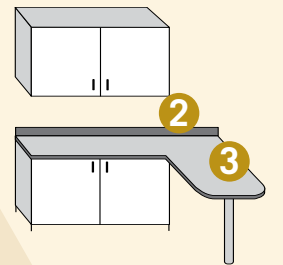
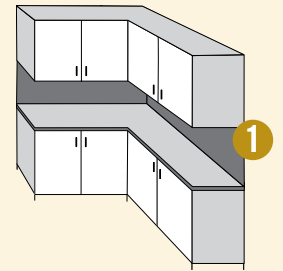
Pastel Melange worksurface

### Accessories

Highly practical and easy to fit, our Earthstone range also includes co-ordinating splashbacks and upstands that allow you to continue your chosen design from worksurface to wall. The end result speaks for itself - and offers a great alternative to tiling.

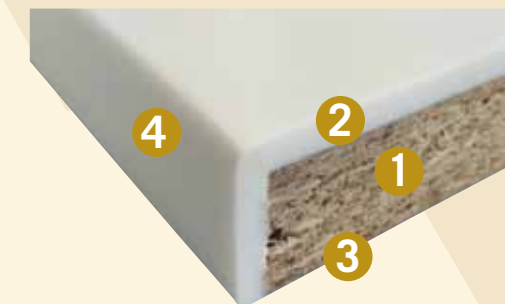


Pastel melange curved edge



- 1 Splashback
- 2 Upstand
- 3 Curved edge

### What is an Earthstone worksurface made of?



- 1 28mm substrate
- 2 6mm surface material
- 3 Moisture resistant barrier
- 4 6mm edge material

## Quality

All Earthstone surfaces conform to EN standards, through ISO 9001:2008 business management systems. Our site is a safe, healthy place to work too, conforming to BS EN ISO 19001:2007 through the Occupational Health and Safety system (OHSAS). We are also supported by the BM TRADA Certification Body – an organisation that provides independent certification, testing, inspection, training and technical services around the world.

As holders of the furniture and kitchen industry's top quality FIRA GOLD certification, you can be confident your Earthstone surface is of a consistently high standard.

Manufactured by our skilled team at our UK site in County Durham.

'Eye catching surfaces that make a statement'



## Our commitment to the environment

We at Wilsonart manufacture all of our Earthstone surfaces with the utmost respect for our planet, using only environmentally sourced substrate material while also conforming to EN standards through ISO 14001:2004 Environmental Management Systems.



## Looking after your Earthstone worksurface

Take good care of your Earthstone worksurface and it will stay like new for years to come.

### General Cleaning and Care

Earthstone worksurfaces are easily maintained and simply require a regular wipe down with a mild detergent and water. With very little maintenance the surface can be returned to its original condition and look new, longer than any other kitchen surface.



### Scuffs and Scratches

Never cut anything directly on the worksurface. However, if scratching does occur, one of the main benefits of your Earthstone worksurface is that it is repairable.\*



### Extreme Heat

Never place any hot items from a heat source directly on to the worksurface. Should any accidental damage of the surface occur it can usually be repaired.\*

\* Refer to the care & maintenance guide for full instructions of how to repair any damage to your Earthstone worksurface. Depending on the severity of damage it may be necessary to request professional assistance.



Nordic Melange worksurface



Your Earthstone Supplier

Lambton Street Industrial Estate, Shildon, County  
Durham, DL4 1PX, United Kingdom  
Tel: +44 (0)1388 774661 Web: [www.wilsonart.co.uk](http://www.wilsonart.co.uk)

 **Wilsonart®**